
A red speech bubble graphic with a white border, containing white text. The bubble has a tail pointing downwards and to the left. The background of the slide features faint, curved lines in the top-left and bottom-right corners.

“We are doing Society a disservice by not meeting the needs of our communities throughout their entire lives.” – Tim Jerome

The background features several sets of curved lines in the top-left and bottom-right corners. These lines are in shades of light gray and include both solid and dashed styles, creating a sense of motion and depth.

*“If My life is a story,
I want to be an
author. But I want
to be a Good
author.” – Jared
Henderson.*

About Me

Tim Jerome



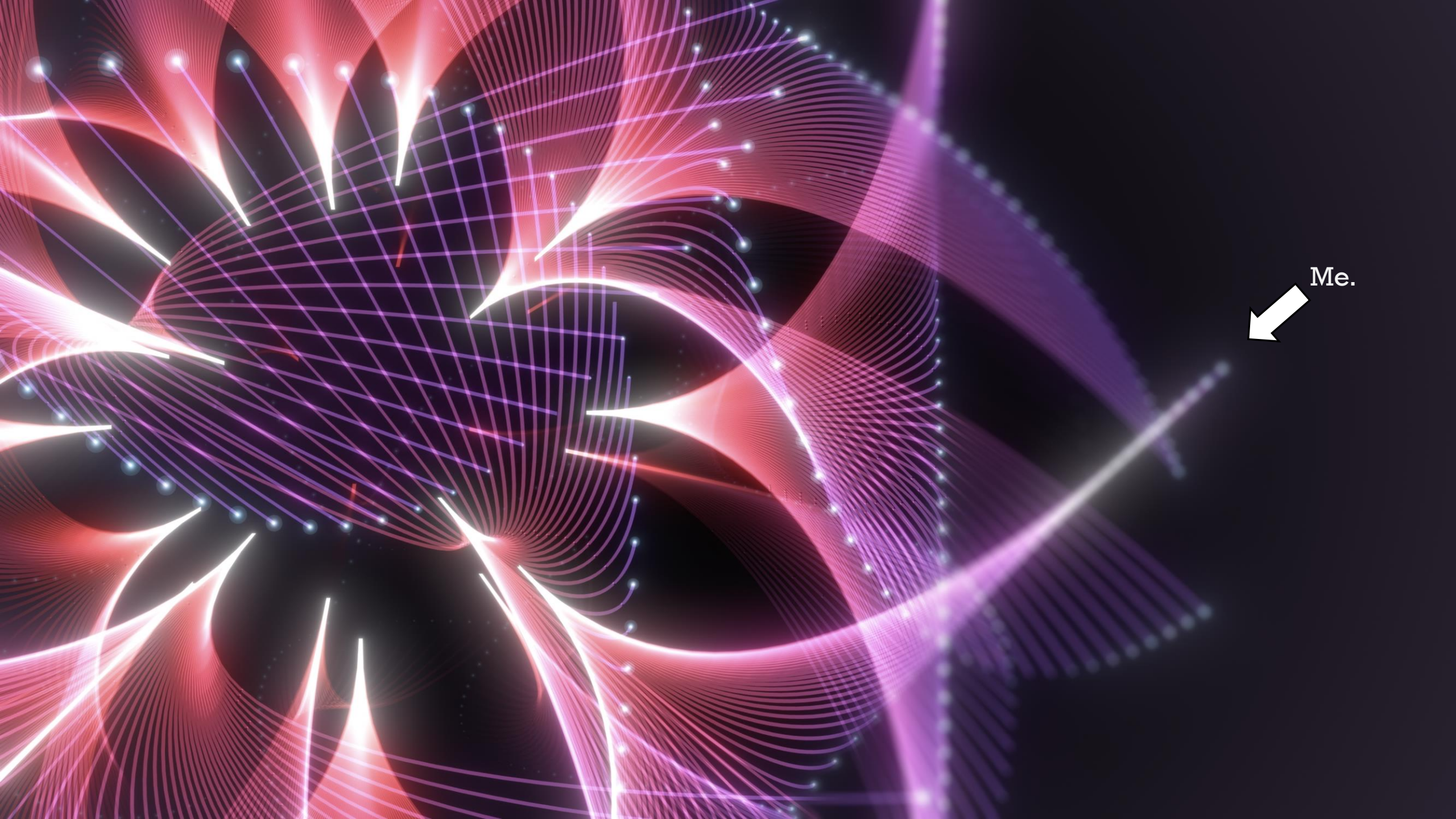
Over 20 years as a PMP® and Project Management trainer, leader in the Project Management Community, Speaker, Mentor, Scholar, PMI training & content Advisor, as well as advisor for Universities, Corporations.

Formally Trained in Facilitation, Negotiation, Conflict Management, Operational Improvement, Financial Analysis, Leadership and more.



CERTIFICATION

EXPERIENCE



Me. 



Timothy Jerome

Manufacturing

...

Overview

Connections (255)

Projects

Contributions (3)

Volunteering (9)

Volunteer Service History

[Find your next volunteering opportunity](#)

Role	Title	Start Date	End Date
PMI-ACP practice exam development	PMI-ACP practice exam development	Apr 2024	Jun 2024
Review CAPM practice exam questions	Review CAPM practice exam questions	Oct 2023	Mar 2024
Review PMP training content	Review PMP training content	Feb 2023	Jun 2023
Component Officer - Rio Grande Chapter	Education Director	Jun 2020	Jul 2021
Component Officer - Rio Grande Chapter	Director at Large	Jun 2016	Jun 2017
Component Officer - Rio Grande Chapter	Past Chapter President	Jun 2014	Jun 2015
Component Officer - Rio Grande Chapter	President	Jun 2013	Jun 2014
Component Officer - Rio Grande Chapter	President Elect	Jun 2012	Jun 2013
Component Officer - Rio Grande Chapter	Professional Development VP	Jun 2010	Jun 2011

IJONA

LAST MILE CONNECT



My friends. My community.

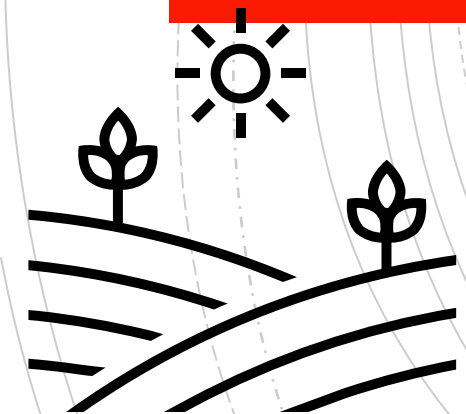
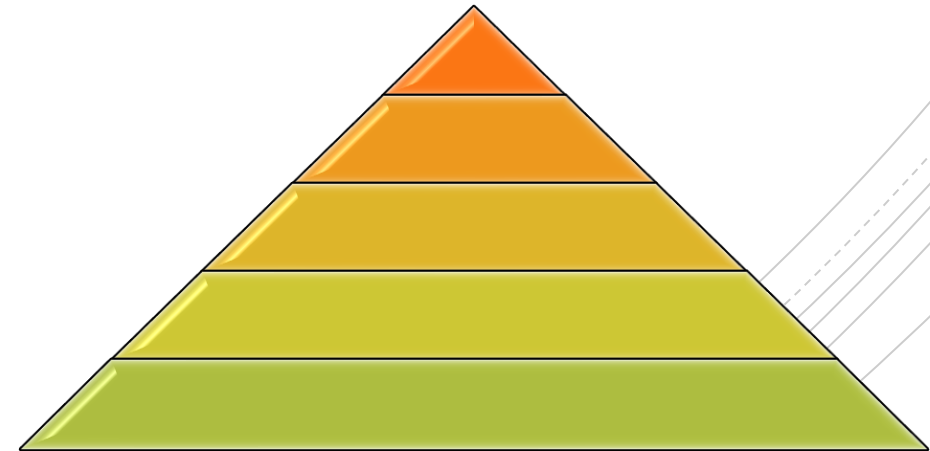
- 
- A background image showing a group of diverse students sitting at a table in a library or study area. They are looking at a laptop and some papers, appearing to be in a collaborative learning environment. The image is partially obscured by a semi-transparent orange overlay on the left side.
- ✍ A unit of Ijona Services. Founded in 2014
 - ✍ Headquartered in Bangalore-India and offices in INDIA, UAE USA
 - ✍ Adding values to students and professionals from 30+ countries
 - ✍ 500+ Trainers / Veterans from USA, UAE, Singapore, Europe & India
 - ✍ Proven expertise in integrating Classroom and Online training models
 - ✍ Established process credentials as per ISO 9001:2008 & ISO/IEC 27001:2013

ABOUT US

2 Stories about a person's Life:

Joseph
Campbell –
“Monomyth”

Abraham
Maslow –
“Fulfillment of
Needs”



The Monomyth

"A hero ventures forth from the world of common day into a region of supernatural wonder: fabulous forces are there encountered, and a decisive victory is won: the hero comes back from this mysterious adventure with the power to bestow boons on his fellow man."

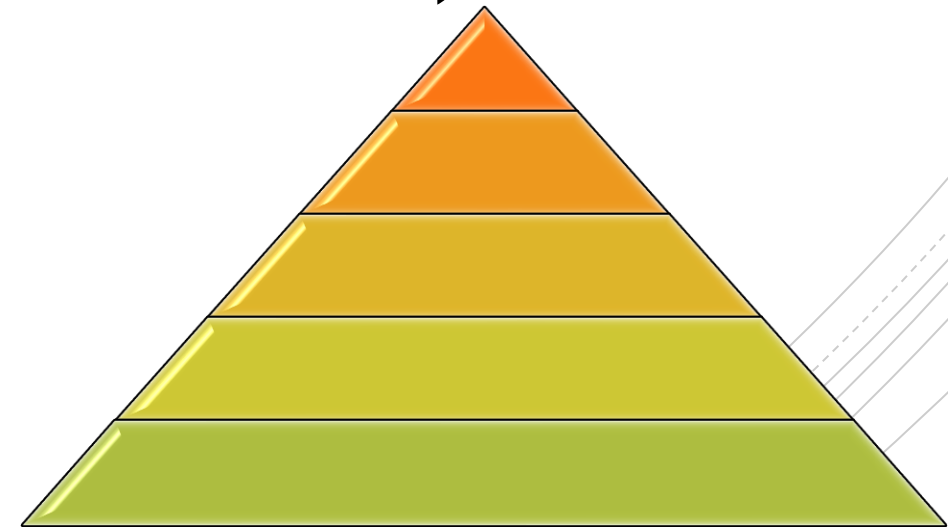
The Monomyth

- Call to Adventure
- Receiving Supernatural Aid
- Meeting with the Goddess
- Return.
- Master of Two Worlds



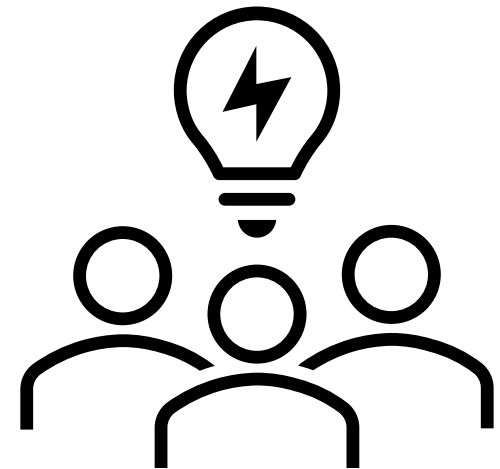
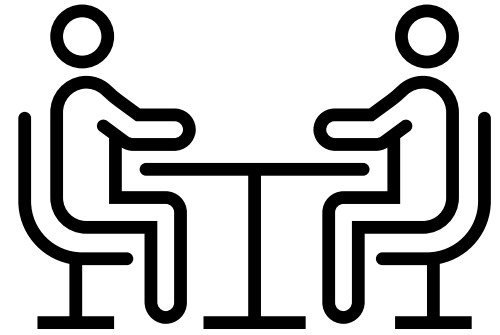
Hierarchy of Needs.

Physiological
Safety
Belonging
Social/esteem
Self-actualization
(and transcendence)



Local Chapters

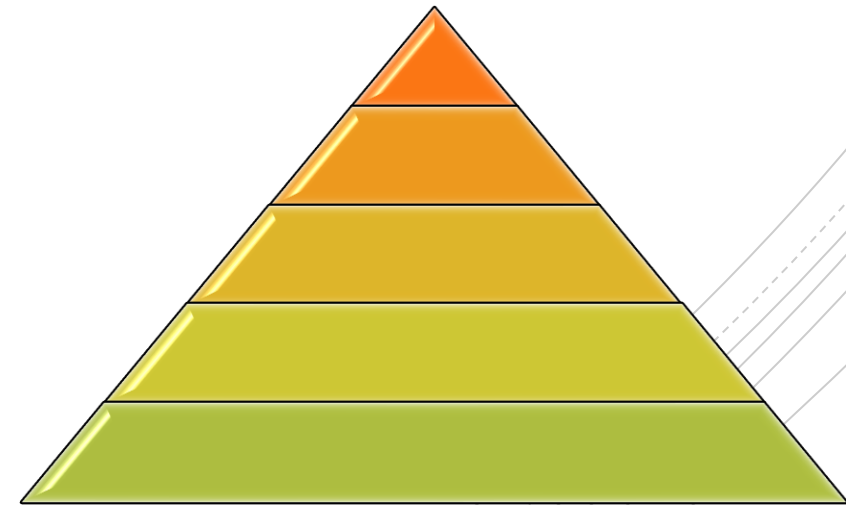
- I need to have leaders who will last out their assignment.
- I need to have leaders who care about the work they do.



The Needs Model:

You don't get people involved without giving them work that fulfills THEIR personal needs.

The chapter follows what all groups must align within: People will engage where their needs are fulfilled.



The 21st Century
Magical Elixir –
Engagement.

Why people engage – they get what they need.

HOW people engage – based on their place in their lives.

I am a student.

I am a worker.

I am an expert.

I am an executive.

I am a wise elder.



I am a student.

- I've set myself on a path; I am pursuing what ignites my curiosity and excitement.
- I need to learn how to settle into a complex work environment.

I am a worker.

- I have expertise in working individually and as a group. I feel the day-to-day be and flow of the work environment. I am settling into an adult life.
- I need opportunities to grow and develop.

I am an expert.

- I've spent more than 2-3 years refining my skills and knowledge. I work with confidence and experience.
- I need a chance to demonstrate, master, and share my competencies.

I am an
executive.

- I am now working on strategy, vision and purpose. This may be something that others (who follow me especially) need to embrace.
- I need to craft my vision and learn how to take it to others to motivate them.

I am a wise
elder.

- I am calm, relaxed, and when I enter the room, confidence is raised.
- I need to be that calming voice of wisdom who can instill confidence with a smile and a wink.

The PMI Chapter's Marching Orders

- **We need to fulfill obligations and regulations of our chapter.**
- **We must engage and meet the needs of our members.**

Crucial Elements influence Productivity.

The Manager or Leader has direct control over these.

- ❖ **Role clarity**
- ❖ **Having opportunity to do what you do best**
- ❖ **Opportunities to develop**
- ❖ **Strong coworker relationships**
- ❖ **A common mission/purpose**

"The Manager or team leader alone accounts for 70% of the variance in team engagement."

"It's the Manager" (Clifton & Harter)

- ❖ **41% lower absenteeism**
- ❖ **70% less safety incidents**
- ❖ **40% fewer defects**
- ❖ **10% higher customer ratings**

- **17% higher productivity**
- **20% higher sales**
- **21% higher profitability**



Write our Story.

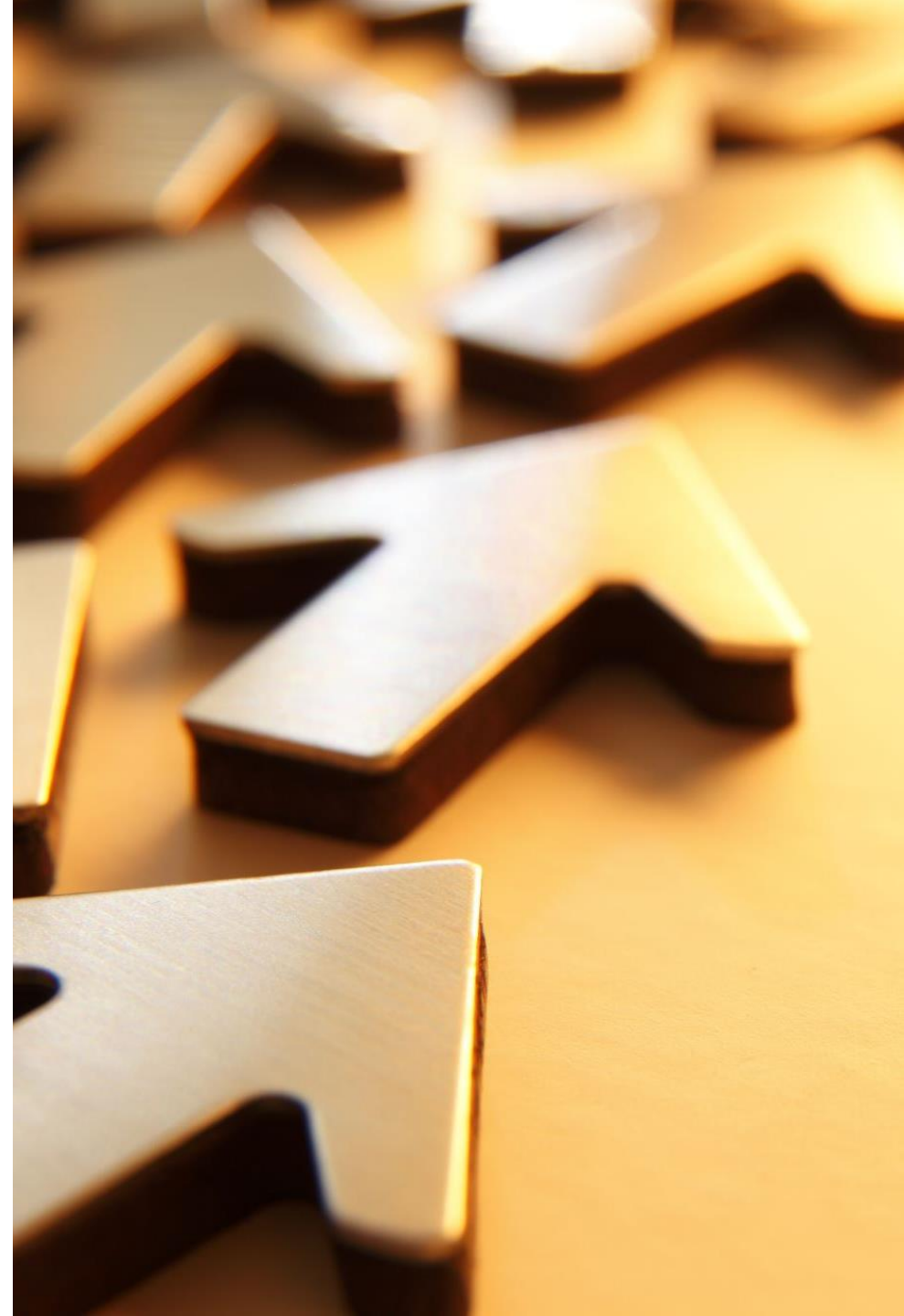
- **Our story is not an organization-focused story.**
- **Our story is a person-focused story.**
- **Help others fulfill their personal needs,**
- **they will work better and harder than you could have asked them.**



What do I do right now?

- ❖ Emotional Intelligence, Self-Awareness.
- ❖ Discipline.
- ❖ Critical Thinking.
- ❖ Justice and Civility.

- Speak, and speak well. Write, and write well. This will help you sharpen your ideas.
- Learn leadership, practice leadership, demonstrate leadership, grow leadership.



Stewardship.

Grow those under your care - students, professionals, experts, executives, wise elders.

Always. Be. Training.

Always Be Practicing.

Students - Engagement and basic work and life skills.

Professionals - Mentoring and confidence.

Experts - An ability to shine, practice, and mentor.

Executives - Opportunity to drive.

Wise Elders - Opportunity to be a counsel.

It's already part
of Us.

- Humans have the innate ability to self-organize and walk 20 miles a day.
- Stewardship is being of service.
- As a servant leader, we owe it to our community of experts to help each other, as they help us become the community that will thrive.

Write your
Chapter's story.

- **The Hero's Journey – the steps that we all follow.**
- **The fulfillment of needs – The motivation to walk 20 miles a day.**
- **A commitment to a vocation of Service and Stewardship to allow the community to go beyond just our dreams.**

How to obtain PDUs for this session:

1. Scan this QR code to the Mentimeter Survey
2. Enter Your Name
3. Complete the Presentation Evaluation

If you are having issues with scanning the QR code, then either use the URL listed below or see the session facilitator or registration desk for assistance.

URL: <https://bit.ly/44UVOrD>

